

Chess Spectator Scoresheet & Analysis

Move	White	Clock	EMT	Eval	Black	Clock	EMT	Eval
69	Rb7	00:12:04	00:01:06	-0.90	Kg3	00:14:15	00:00:18	-1.20
70								
71								
72								
73								
74								
75								
76								
77								
78								
79								
80								

Chess Spectator Scoresheet & Analysis

FIDE WorldChess Candidates Tournament

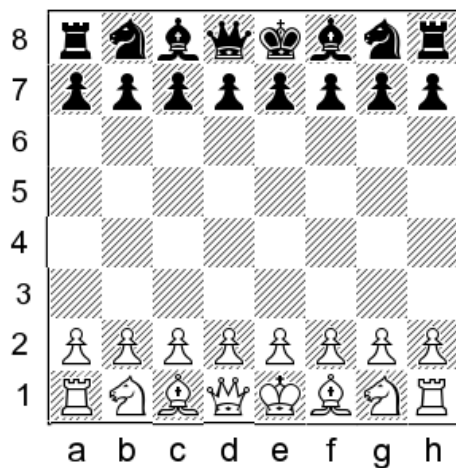
Berlin, Germany

Date: 2018.03.27

Round: 14.4

Final Board Position

Timing Analysis	White	Black
Total Time	03:07:40	03:05:55
Average Move Time	00:02:43	00:02:41
Slow Moves		
1	00:40:53 (13)	00:16:11 (12)
2	00:18:31 (41)	00:13:24 (15)
3	00:11:59 (16)	00:12:43 (9)
Fast Moves		
1	00:00:01 (57)	00:00:03 (33)
2	00:00:01 (63)	00:00:03 (32)
3	00:00:01 (23)	00:00:03 (64)
Engine Moves	22 (31%)	20 (28%)



Player Information	White	Black
Name	Grischuk, Alexander	Caruana, Fabiano
Title	GM	GM
Elo	2767	2784
FideId	4126025	2020009
Team	-	-
Result	0	1

Game Information	-
Opening	ECO C43 Petrov
Time Control	100/40m + 50/20m + 15'/end & 30'/move
Annotator	(c) ChessSpectator 2013-2018

Engine Analysis Evaluation by pgn-extract (StockFish 8)

Legends: S1/2/3 Slow move times F1/2/3 Fast move times

Eval: + favours white - favours black

This document was produced by the Chess Spectator System

Chess Spectator Scoresheet & Analysis

Move	White	Clock	EMT	Eval	Black	Clock	EMT	Eval
1	e4	01:40:52	00:00:06	1.20 (0)	e5	01:40:54	00:00:07	-0.20 (-16)
2	Nf3	01:41:18	00:00:05	-0.20 (35)	Nf6	01:41:20	00:00:05	0.00 (-29)
3	d4	01:41:29	00:00:19	0.90 (43)	Nxe4	01:41:27	00:00:23	-1.10 (-30)
4	dxe5	01:41:48	00:00:10	0.30 (12)	d5	01:41:27	00:00:29	-0.70 (12)
5	Nbd2	01:42:02	00:00:16	-1.50 (11)	Nxd2	01:41:09	00:00:48	-4.30 (-8)
6	Bxd2	01:42:12	00:00:20	0.00 (6)	Be7	01:40:38	00:01:01	-0.10 (-11)
7	Bd3	01:40:00	00:02:41	0.60 (10)	c5	01:39:42	00:01:27	0.60 (-6)
8	c3	01:39:26	00:01:04	0.80 (4)	Nc6	01:33:47	00:06:25	0.50 (-13)
9	O-O	01:37:49	00:02:07	0.30 (17)	Bg4	01:21:34	00:12:43- S3	-0.30 (0)
10	Re1	01:30:57	00:07:21	-0.10 (9)	Qd7	01:19:43	00:02:22	-0.20 (-24)
11	h3	01:23:10	00:08:17	0.00 (23)	Bh5	01:14:27	00:05:46	0.10 (-15)
12	Bf4	01:19:45	00:03:53	0.50 (16)	Qe6	00:58:48	00:16:11- S1	0.10 (-23)
13	a3	00:39:22	00:40:53- S1	0.10 (37)	O-O	00:48:36	00:10:41	0.30 (3)
14	b4	00:35:31	00:04:21	0.20 (1)	h6	00:45:01	00:04:05	0.40 (7)
15	Bg3	00:24:36	00:11:25	-0.20 (0)	b6	00:32:08	00:13:24- S2	-0.10 (0)
16	Nd4	00:13:07	00:11:59- S3	0.50 (22)	Bxd1	00:27:07	00:05:31	-9.60 (-14)
17	Nxe6	00:12:45	00:00:52	0.20 (14)	fxe6	00:27:33	00:00:04	-4.00 (-11)
18	Raxd1	00:10:59	00:02:16	-0.40 (0)	c4	00:25:32	00:02:32	-0.90 (24)
19	Bc2	00:11:27	00:00:00	-0.60 (-5)	b5	00:21:00	00:05:02	-0.60 (39)
20	a4	00:08:48	00:03:10	-0.70 (-42)	a6	00:21:05	00:00:25	-0.80 (37)
21	f3	00:04:18	00:05:00	-0.60 (-50)	Bg5	00:13:53	00:07:42	-0.70 (43)
22	Bf2	00:02:16	00:02:31	-0.30 (-4)	Bf4	00:13:35	00:00:48	-0.30 (6)
23	Bc5	00:02:45	00:00:01- F1	-0.10 (0)	Rfd8	00:10:07	00:03:58	0.30 (20)
24	Bd6	00:03:09	00:00:06	0.00 (-8)	Bg3	00:09:59	00:00:38	-0.10 (16)
25	Re2	00:03:28	00:00:10	0.20 (-6)	g5	00:10:09	00:00:21	0.20 (9)
26	Kf1	00:03:46	00:00:11	0.00 (-9)	Kf7	00:09:59	00:00:40	-0.20 (34)
27	Bc7	00:03:32	00:00:44	-0.40 (-38)	Re8	00:07:04	00:03:26	-0.40 (27)
28	Bd6	00:03:53	00:00:09	-0.20 (-9)	Rac8	00:06:02	00:01:31	0.00 (14)
29	Ra1	00:03:16	00:01:07	-0.10 (-5)	Red8	00:05:00	00:01:33	-0.10 (36)
30	Bb1	00:01:41	00:02:05	-0.30 (-29)	Rd7	00:02:27	00:03:03	-0.90 (36)
31	Ra3	00:01:02	00:01:09	-0.80 (-41)	d4	00:02:24	00:00:33	-0.70 (111)
32	axb5	00:01:04	00:00:28	0.70 (-84)	axb5	00:02:50	00:00:03- F2	-0.20 (118)
33	cxd4	00:00:48	00:00:45	1.10 (-85)	Nxd4	00:03:17	00:00:03	0.00 (83)
34	Rea2	00:00:43	00:00:35	-0.50 (-94)	Nc6	00:01:56	00:01:51	-0.40 (102)

Chess Spectator Scoresheet & Analysis

Move	White	Clock	EMT	Eval	Black	Clock	EMT	Eval
35	Be4	00:00:36	00:00:37	-0.20 (-95)	Bxe5	00:01:29	00:00:57	-1.20 (79)
36	Bxc6	00:00:48	00:00:18	2.10 (-85)	Rxd6	00:01:55	00:00:04	-1.60 (114)
37	Bxb5	00:01:14	00:00:04	-1.00 (-105)	Rd1+	00:01:14	00:01:11	-4.20 (122)
38	Ke2	00:01:21	00:00:23	-2.00 (-121)	Rg1	00:01:21	00:00:22	-1.40 (118)
39	Ke3	00:00:50	00:01:02	-1.20 (-114)	Rb1	00:00:42	00:01:09	-1.40 (158)
40	Ra7+	00:50:56	00:00:23	2.80 (-80)	Kf6	00:50:53	00:00:18	0.10 (137)
41	Bd7	00:32:56	00:18:31- S2	-0.60 (-133)	Bf4+	00:46:41	00:04:42	-3.30 (193)
42	Ke2	00:22:50	00:10:35	-1.30 (-140)	Rd8	00:42:55	00:04:16	-1.10 (178)
43	Rc2	00:19:35	00:03:45	-1.10 (-188)	Rxb4	00:35:59	00:07:26	-1.70 (262)
44	Bc6	00:19:30	00:00:35	-1.40 (-182)	c3	00:27:33	00:08:57	-1.70 (181)
45	Rd7	00:18:00	00:02:00	-1.10 (-157)	Rc8	00:23:31	00:04:32	-1.20 (178)
46	Be4	00:17:27	00:01:02	-1.00 (-141)	h5	00:23:16	00:00:46	-1.00 (149)
47	Kd3	00:15:30	00:02:27	-1.60 (-146)	Rb2	00:20:56	00:02:50	-1.40 (170)
48	Ke2	00:10:17	00:05:43	-1.10 (-158)	h4	00:20:44	00:00:43	-1.10 (184)
49	Rd1	00:09:34	00:01:13	-1.50 (-191)	Ke5	00:19:40	00:01:34	-0.70 (193)
50	Ra1	00:09:10	00:00:53	-0.80 (-170)	Rd8	00:18:42	00:01:28	-1.30 (183)
51	Rd1	00:09:20	00:00:20	-1.10 (-169)	Rdb8	00:18:52	00:00:20	-0.70 (193)
52	Ra1	00:08:40	00:01:10	-0.80 (-176)	Bd2	00:18:03	00:01:20	-0.60 (192)
53	Ra6	00:07:31	00:01:40	-0.80 (-184)	Rd8	00:13:04	00:05:28	-1.00 (186)
54	Rc6	00:05:10	00:02:50	-1.50 (-183)	Rb1	00:11:22	00:02:13	-2.10 (270)
55	Kf2	00:03:52	00:01:47	-2.10 (-165)	Ra1	00:08:42	00:03:10	-2.10 (225)
56	Rc4	00:02:11	00:02:11	-1.90 (-194)	Rd4	00:07:19	00:01:53	-1.40 (248)
57	Rc8	00:02:40	00:00:01- F2	-1.20 (-260)	Rb4	00:06:51	00:00:59	-1.50 (264)
58	Ke2	00:00:46	00:02:24	-1.40 (-232)	Kf4	00:06:52	00:00:29	-1.30 (721)
59	Kf2	00:01:03	00:00:12	-1.30 (-312)	Rbb1	00:05:46	00:01:36	-0.80 (473)
60	Rf8+	00:15:54	00:00:39	1.60 (-304)	Ke5	00:21:12	00:00:04- F3	-0.90 (317)
61	Bd3	00:14:06	00:02:18	-0.90 (-277)	Rb2	00:16:43	00:04:59	-1.30 (321)
62	Ke2	00:10:23	00:04:13	-1.50 (-329)	Re1+	00:15:56	00:01:16	-3.30 (390)
63	Kf2	00:10:52	00:00:01- F3	-0.90 (-410)	Rc1	00:15:55	00:00:32	-0.60 (412)
64	Rxb2	00:11:06	00:00:15	5.90 (-391)	cxb2	00:16:22	00:00:03- F1	-0.90 (422)
65	Rb8	00:11:29	00:00:07	-0.90 (-426)	Bc3	00:16:23	00:00:29	-0.10 (444)
66	Be4	00:11:53	00:00:06	-0.10 (-450)	Bd4+	00:15:22	00:01:31	-3.40 (476)
67	Ke2	00:12:21	00:00:02	-0.80 (-479)	Kf4	00:14:56	00:00:56	-1.30 (508)
68	Rb4	00:12:40	00:00:11	-1.70 (-556)	e5	00:14:03	00:01:23	-1.10 (616)